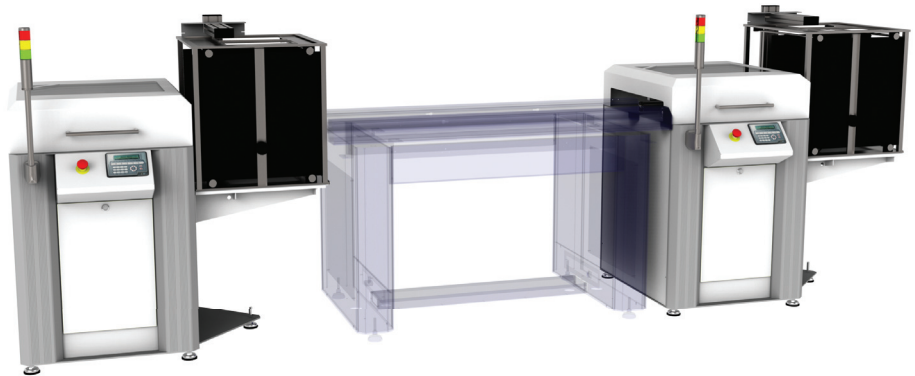


Light Loader/Unloader



Standard features:

- Unload conveyor, light tower, magazine locking
- Supports most standard sized magazines
- PLC controlled
- SMEMA interface

The Light Loader/Unloader is an 'open' variant of the Single Loader/Unloader.

The Loader

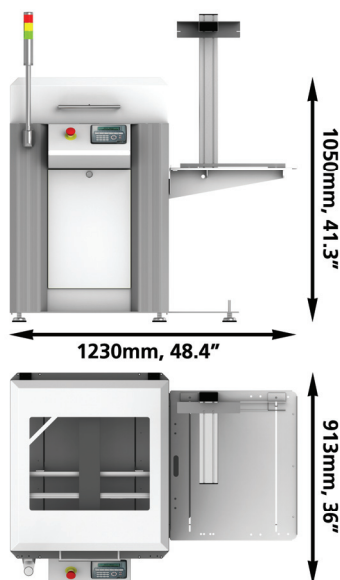
The Loader separates and loads bare or pre-mounted PC-Boards from rasterized magazines, onto a subsequent production line.

The Unloader

The Unloader unloads the production line and loads bare or pre-mounted PC-Boards into rasterized magazines.

The Loader and Unloader support most standard sized magazines.

Filling ratio, skip factor, first and last load / unload position of the magazine is selectable. All input is made through the operation panel, which makes the unit easily managed. When necessary, the operation panel also provides the operator with informative messages.



Technical information:

- Board transport level: 940 ± 30 mm (37 ± 1.2")
- Mag. lower edge to first PCB slot: Min. 30 mm (1.2")
- Mag. lower edge to last PCB slot: Max. 547 mm (21.5")
- Max. magazine depth: 535 mm (21")
- Max. magazine width: 580 mm (22.8")
- Max. magazine height: 570 mm (22.4")
- Max. lift weight: 30 kg (66 lbs)
- Top/bottom clearance: 25/20 mm (1.0/0.8")
- Min. board thickness: 0.7 mm (0.028")
- Voltage: 100 - 240 VAC, 50/60 Hz
- Max. power consumption: 0.4 kWh
- Air supply: 5-10 bar, 600 l/h (70-140 psi, 0.35 cfm)
- SMEMA Interface

Options:

- Motorized width adjustment (Unloader)
- Automatic width adjustment (Unloader)
- Master function for automatic width adjustment (Loader)
- See order guide for more options

Order codes: Light Loader, K-017-0764 Light Unloader, K-017-0765